

1316 JOBS

658 direct jobs with every direct job creating another indirect job



\$775 MILLION

industry economic activity in the Wide Bay & Burnett region

Jobs | Regional | Renewable | Carbon friendly | Innovative | Value added

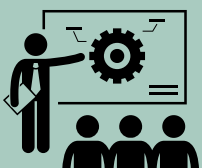
INDUSTRY REQUIREMENTS FOR GROWTH



Resource Security



Supply Chain & Manufacturing Competitiveness



Skills & Training

MAJOR LOCAL EMPLOYERS

- Hyne Timber Tuan Sawmill
- Hyne Timber GLT Plant
- DTM Truss & Frame
- Howard Sawmill
- MBM Harvesting Solutions (Sunchip)
- Dale & Meyers Hardwood Mill
- HQPlantations (forests & nursery)
- Koppers Wood Products
- Baywood
- CQ Building Supplies

Queensland's timber industry is the state's third most valuable agricultural processing industry. We have a strong value chain footprint, with wood processing and timber manufacturing accounting for around 70% of the 11,600 direct timber industry jobs.